



Sample Views and Editors

Strategy Planning and Roadmaps

Support strategic initiatives including digitalisation

Executive Decision Support

Targeted senior Management Dashboards



View: Strategic Plan Summary for Maintenance Outsourcing

Description

Where possible outsource maintenance to save costs.

Plan Status

Timeline

March 2019 March 2020

Impacted Business Elements

TYPE	BUSINESS ELEMENT	DESCRIPTION	IMPACT
Business Process	Manage Network Faults and Outages	Monitoring and alerting of responses to any incidents in the network	OUTSOURCE
Business Process	Allocate Maintenance Tasks	Allocate maintenance task to the maintenance teams	OUTSOURCE
Business Process	Maintain Regulator	Perform maintenance on the regulator to ensure it is performing optimally	OUTSOURCE
Organisation	Maintenance	Site maintenance	OUTSOURCE

Impacted Application Elements

TYPE	APPLICATION ELEMENT	DESCRIPTION	IMPACT
Application	AMS Fleet Solutions	Tracking of multiple types of vehicle assets	DECOMMISSION
Application	GenGrid	Scheduling management solution	DECOMMISSION
Application Service	Asset Location Management Service	Identifies the location of an asset based on GPS data	ESTABLISH

Depends on Plans

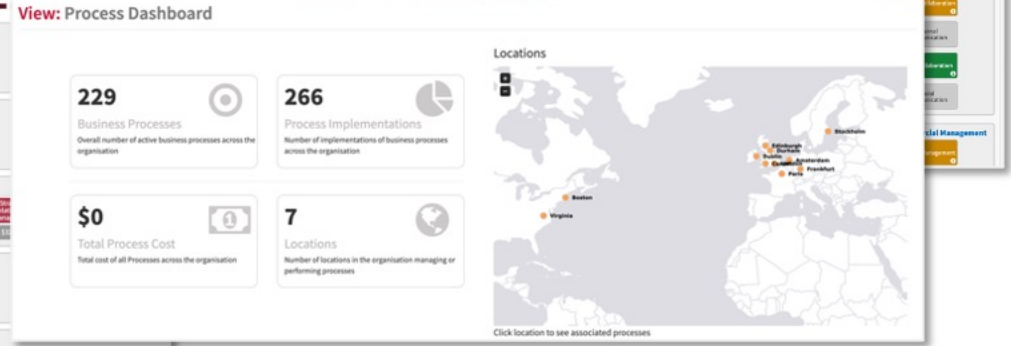
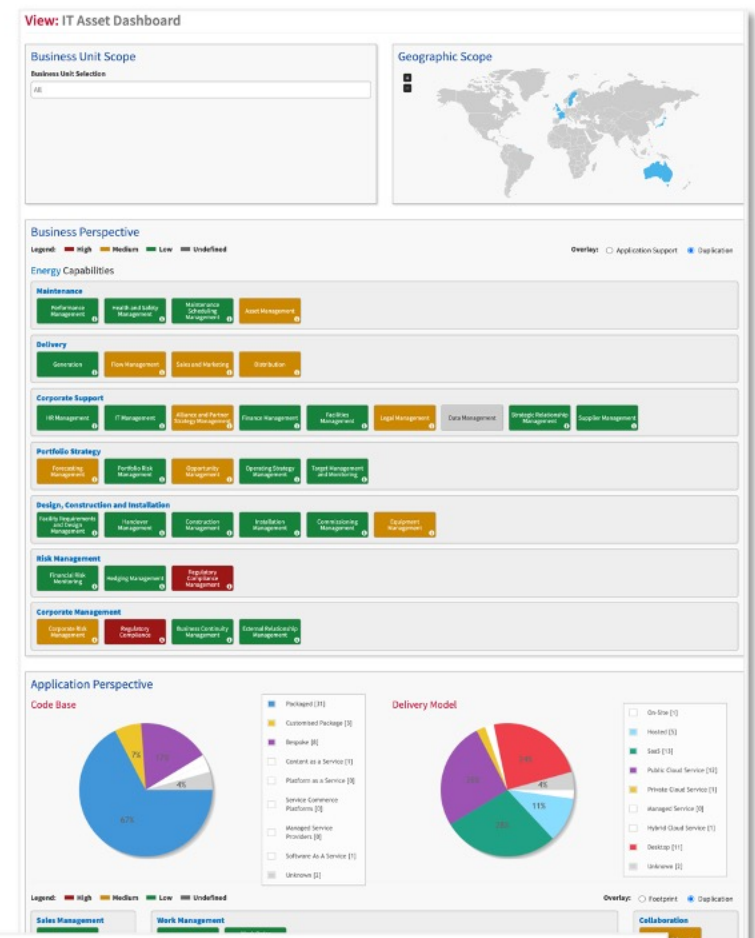
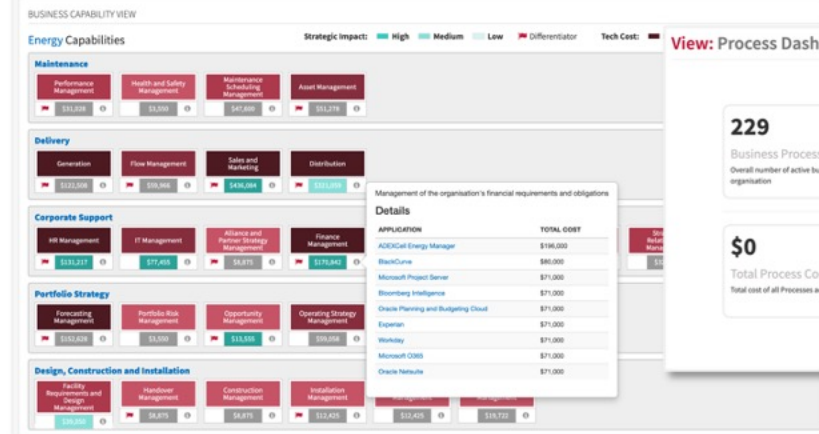
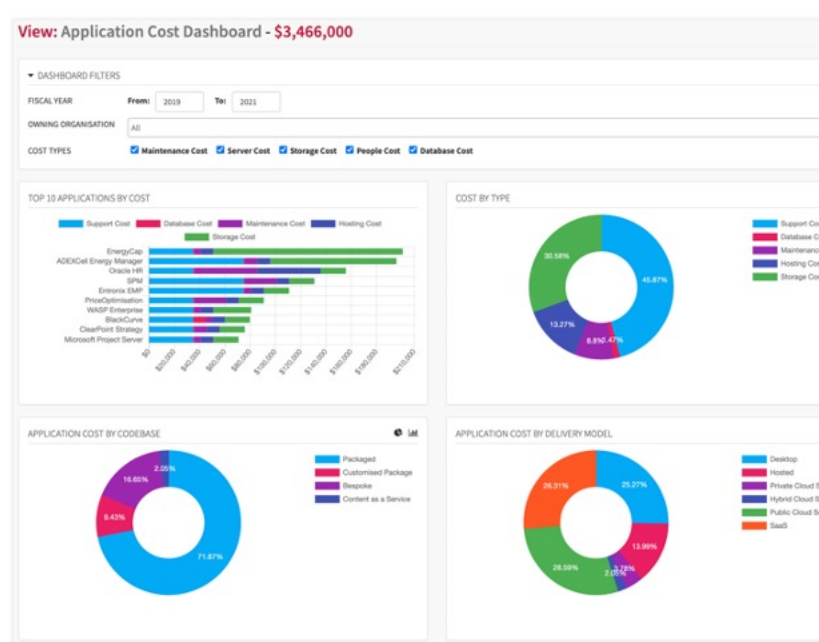
STRATEGIC PLAN	DESCRIPTION	START DATE	END DATE
Country Consolidation	Consolidate processes and applications across countries	30 April 2019	31 August 2019

Supports Plans

None defined

Supported Objectives

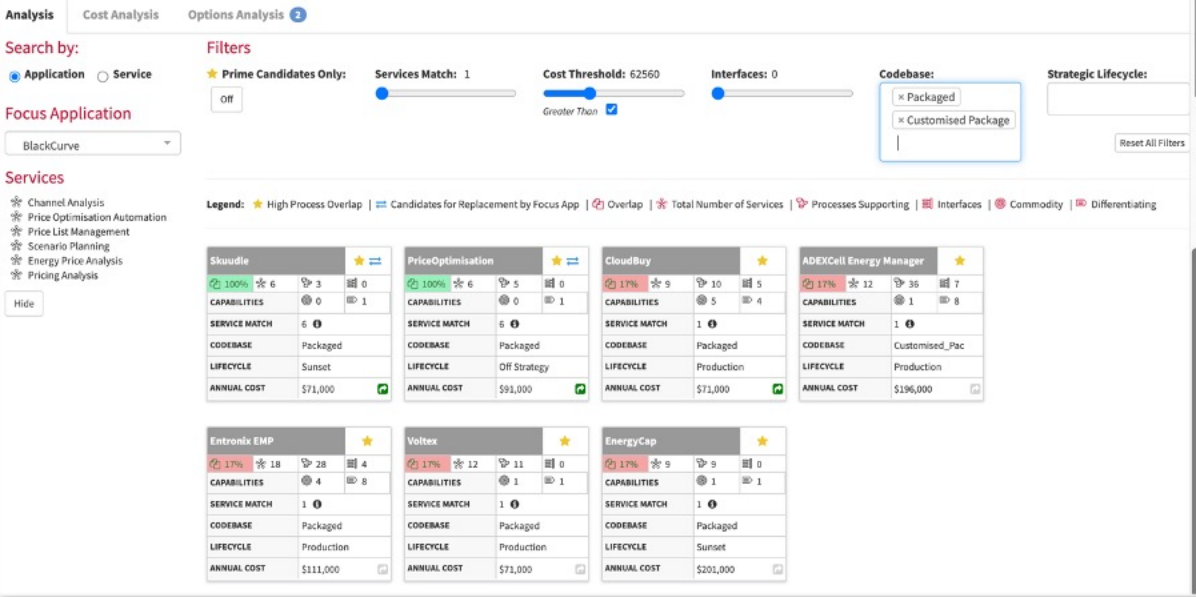
OBJECTIVE	DESCRIPTION	KPIs	MOTIVATING DRIVERS
Provide an Efficient Operational Platform			
Create an Effective Energy Sharing Platform	Allow clients to share energy and feed back into the	Suppliers Onboarded - Suppliers Onboarded	Production Efficiency



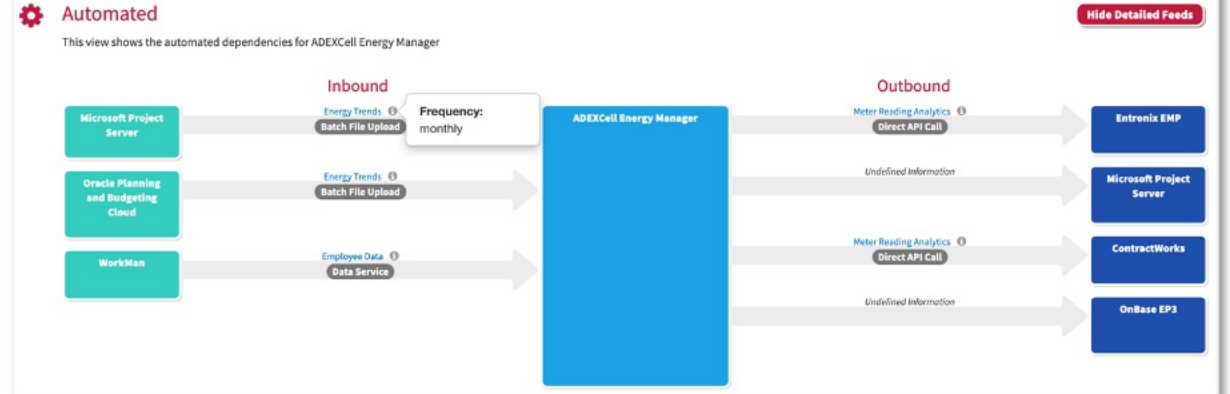
Rationalisation Support

Reduce duplication and manage cost

View: Application Rationalisation Analysis



View: Application Dependency Model for ADEXCell Energy Manager



View: Application Technical Health Analysis

Matrix

The following matrix provides a summary view of the technical risk for the key applications supporting the enterprise.

High Risk Low Risk

	Overall	Reliability	Recoverability	Supportability	Performance	Interoperability	Documentation Availability	Resource Availability	Technical Complexity
ADEXCell Energy Manager	64%	3	4	4	2	2	4	2	3
AMS Fleet Solutions	52%	3	3	2	3	2	3	3	2
Autodesk	59%	3	3	2	3	2	3	2	2
BlackCurve	67%	5	5	4	2	3	3	3	2
Bloomberg Intelligence	66%	4	3	3	3	4	5	5	4
CTXGlobal	55%	3	3	4	3	3	3	3	2
ClearPoint Strategy	57%	3	2	3	2	2	3	4	4
CloudBuy	56%	3	3	2	3	2	3	2	2

Standards Management

Support solution architects with application and technology standards

View: Standard Technology Product Selector

1 Introduction > 2 Select Technology Capabilities > 3 Select Reference Architectures > 4 Select Technology Products > 5 Review Results >

i. Select Reference Architecture

Select a Reference Architecture to be implemented

Cloud Micro-Service

ii. Select Technology Products

Select a Technology Component on the right then drag a Technology Product on to each Component in the selected Architecture

Legend: Mandatory Recommended Permitted Waiver Required Non Compliant

Hadoop 2.8 Hadoop 2.9 Hadoop 3 MongoDB 3.6

AWS DynamoDB Azure Table Storage

iii. Reference Architecture Workspace

Drag Product Here

```

graph TD
    ProxyServer[Proxy Server] --> MicroServiceFramework[Micro-Service Framework]
    ProxyServer --> ContainerSoftware[Container Software]
    MicroServiceFramework --> NoSQLDatabase[NoSQL Database]
    MicroServiceFramework --> ContainerSoftware
    
```

View: Application Current State Model

Model

The Application Current State Model provides a high level overview of the key application building blocks that support the execution of business processes across the enterprise.

Show/Hide Application Count

DUPLICATION HEATMAP: More than 2 Apps 2 Apps 1 App No Apps # = Number of Applications for this Service

Sales Management

- Account Planning
 - Sales Reporting Services
- Customer Campaign Planning
 - Customer Relationship Management Services
- Customer Relationship Mgt
 - Contact Management Services
 - Customer Data Management Services
 - Customer Relationship Management Services
 - Customer Support Services

Work Management

- Asset Management
 - Asset Management Services
 - Asset Mapping Services
 - Asset Quality and Maintenance
 - Inventory Management
- Inventory Mapping Services
- Inventory Optimization Services
- Work Order Scheduling Management Services

Collaboration

- Content Collaboration
 - Content Collaboration Services
 - Document Management Services
- Personal Communication
- Social Collaboration Services
- Social Communication

Business Management

APPLICATIONS

APPLICATION	STANDARD FOR ORGS	STATUS	USED BY
Oracle Netsuite	Central Procurement	Production	
WASP Enterprise	Maintenance	Production	
AMS Fleet Solutions			
Autodesk		Production	

Manage Technology Risk

Understand NIST vulnerabilities and Lifecycles

View: Security Profile

NIST NVD

Vendor: All Severity: All Show NVD Products

The Vulnerabilities tab shows those products where an exact match is found. The All tab highlights products with vulnerabilities for vendors in the repository.

Vulnerabilities

All

CANONICAL

Product
Ubuntu Linux
Version: 14.04

Severity
MEDIUM

Description
classroom in Gluster before 3.5.5.4 contains a vulnerability that could allow an unauthorized, unauthenticated, remote attacker to cause a denial of service (DoS) condition in an affected file.

Status
NONE HIGH

CVE ID
CVE-2014-0222

Affected Versions
No Information

Potential Impacts
Business: 25 Application: 3

Show Impacts

CANONICAL

Product
Ubuntu Linux
Version: 14.04

Severity
MEDIUM

Description
GNU Wget before 1.13.5 is prone to a cookie injection vulnerability in the wget_new function in http.c via a /yn sequence in a redirection line.

Status
NONE HIGH NONE

CVE ID
CVE-2014-0434

Affected Versions
No Information

Potential Impacts
Business: 25 Application: 3

Show Impacts

CANONICAL

Product
Ubuntu Linux
Version: 14.04

Severity
MEDIUM

Description
Ubuntu before 14.10 and 14.04 before 14.04 allows a memory-cache side-channel attack on HMAC signatures that can be mitigated through the use of blinding during the signing process in the

Status
HIGH NONE NONE

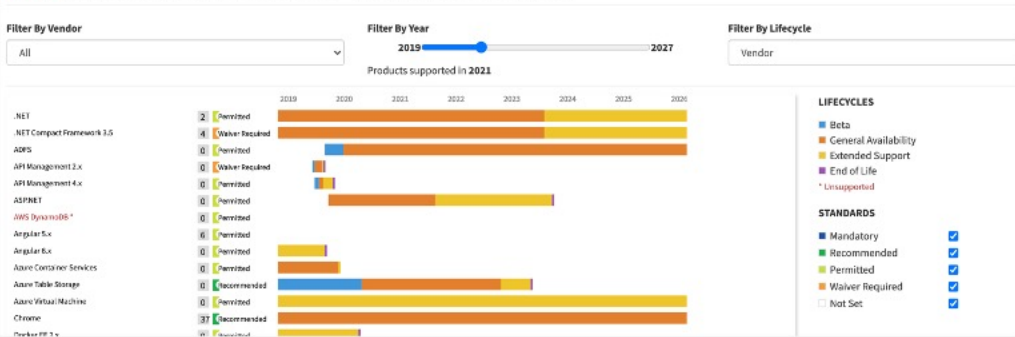
CVE ID
CVE-2014-0435

Affected Versions
No Information

Potential Impacts
Business: 25 Application: 3

Show Impacts

View: Technology Product Lifecycles - Vendor Lifecycle Status



Simple Data Maintenance

Open to all, no training or EA knowledge necessary

Application Editor: ADEXCell Energy Manager

This editor assists you in the maintenance of Application information.

General Integrations Business Usage Technology Usage Costs

With which other applications does this application exchange data?

Filter...

Sources of Data

- Microsoft Project Server
- Oracle Planning and Budgeting Cloud
- WorkMan

Layout: Vertical Horizontal

Targets for Data

- Entronix EMP
- ContractWorks
- Microsoft Project Server
- OnBase EP3

Diagram showing data flow between ADEXCell Energy Manager and various sources and targets.

Application Editor: ADEXCell Energy Manager

This editor assists you in the maintenance of Application information.

General Integrations Business Usage Technology Usage Costs

For which purposes do organizations use ADEXCell Energy Manager?

Select Organizations... Select Business Processes...

	ANALYSE MARKET PRICING	COLLECT METER DATA - EU	DEVELOP NETWORK OPERATIONAL PLANS	EXTEND STORAGE
ACQUISITIONS				
DATA PROCESSING				
ENGINEERING				
GENERATION				
MARKETING				
METERING AUSTRALIA				
METERING FRANCE				

Select Supporting Functionality

Select the functionality that supports Engineering

- Functionality Unknown
- Specific Functionality
 - Benchmarking
 - Budgeting & Forecasting
 - Compliance Management
 - Contract Management
 - Cost / Use Reporting
 - Distributor Load Management
 - Emissions Monitoring
 - Emissions Trading
 - Energy Price Analysis
 - Load Control
 - Load Forecasting
 - Meter Tracking

Project Editor: Enhanced Data Analytic

This editor assists you in the maintenance of Project information.

Project Details

Project Name: Enhanced Data Analytic

Description: Build/buy or enhance existing applications to provide meet the Energy Analytics required to meet customer satisfaction and savings requirements

Approval Status: Approved Not Approved Suspended

Lifecycle Status: Justify Initiate Plan Execute Close Closed

Project Dates

Planned Start: 1st Jan 2020 Actual Start: 1st Nov 2019 Planned End: 1st Jun 2020 Forecast End: 8th Jun 2022

Project Stakeholders

Individuals: Project Sponsor: Joe Smith Project Manager: Graham Bennett

Organisations: Project Organisational Sponsor: Marketing

Project Costs/Benefits

Estimated Costs:

DESCRIPTION	RECCURENCE	TYPE	FROM DATE	TO DATE	AMOUNT
An Updated cost	Once	Server Cost	20th Aug 2019	14th Jul 2021	\$200,000
Annual database service costs	Annual	Database Cost	15th Aug 2019	14th Jul 2021	\$200,000

Estimated Benefits:

DESCRIPTION	RECCURENCE	TYPE	FROM DATE	TO DATE	AMOUNT
A sales benefit	Annual	Direct Product Sales	1st Sep 2019	1st Sep 2020	\$75,000
This benefit is only short term	Annual	Retail Advisory Services	14th Jul 2021	15th Aug 2022	\$50,000
uphillside	Annual	Direct Product Sales	14th Jul 2021	15th Aug 2022	\$34,556

Future Value Graph:

Net Present Value: Target Rate of Return: 4% NPV: -665655.01

Budget Status: Approved Pending Not Approved

Amount: £24,443 From Date: 15th Aug 2019 To Date: 14th Jul 2021 Status: Approved

Editor: Technology Vendor Lifecycle Editor

Use this editor to create or update Vendor Lifecycles for Technology Products

Product Vendor: Microsoft

	BETA	GENERAL AVAILABILITY	EXTENDED SUPPORT	END OF LIFE
.NET		2008-11-18	2023-10-10	2028-10-01
.NET Compact Framework 3.5		2008-11-18	2023-10-10	2026-10-22
ADFS	2019-11-04	2020-03-05	2031-11-26	2033-12-01
ASP.NET		2019-11-28	2021-10-26	2023-11-28
Active Directory				
Azure				
Azure AAD				

Selected Product: .NET Compact Framework 3.5

BETA

GENERAL AVAILABILITY 2008-11-18

EXTENDED SUPPORT 2023-10-10

END OF LIFE 2026-10-22

Business Capability Model Editor

This editor assists you in the maintenance of Capability Models.

CAPABILITY CATALOGUE

Create New Edit Add to tree Delete

Search...

Orphan Only: ☐

- Acquisition Management
 - Monitoring and assessment of potential acquisitions for the organis...
 - BUSINESS CAPABILITY 1 Parents
- Advertising Management
 - Capability focused on advertising strategy and production
 - BUSINESS CAPABILITY 1 Parents
- Alliance & Partner Strategy Management
 - Strategy definition for alliances and partners
 - BUSINESS CAPABILITY 1 Parents
- Asset Management
 - Management of assets within the organisation
 - BUSINESS CAPABILITY 1 Parents

CAPABILITY MODEL

Create New Edit Detach References

Search...

- Energy
 - Corporate Support (Back)
 - HR Management
 - Payroll Processing
 - Performance Management
 - Outage Management
 - Reliability Monitoring
 - Recruitment
 - Employee Development
 - Remuneration, Rewards and Retention
 - Retirement Planning
 - HR Planning and Policies
 - IT Management
 - Alliance & Partner Strategy Management
 - Finance Management

Sample Views and Editors

Strategy Planning and Roadmaps**2**

Roadmap Timeline
Strategic Plan Summary

Executive Decision Support**2**

Application Cost Dashboard
IT Asset Dashboard
Process Dashboard

Deep Insights**3**

Business Application Footprint

Rationalisation Support**4**

Application Rationalisation Analysis
Application Dependency Model
Application Technical Health Analysis

Standards Management**5**

Standard Technology Product Selector
Application Current State Model

Manage Technology Risk**5**

Security Profile
Technology Product Lifecycles

Simple Data Maintenance**6**

Application Editor
Technology Vendor Lifecycle Editor
Business Capability Model Editor
Project Editor